

RSS-II

Mechanical rotate-speed annunciator

As a backup protection when the water-wheel generator set is overspeed, RSS-II mechanical

rotate-speed annunciator includes rotate speed detector (RSD) and rotate speed trip (RST). The rotate speed detector installs on the rotator of the set, rotating with hydroturbine at same speed. The rotate trip installs on the fixed parts of the set. When the rotate-speed of the water-wheel generator set reaches or exceeds the design required setting value, the tip of detector moves out and percusses on the pothook of the trip, sending out contact signal. The accident control valve acts, the set rapidly stops .It act s as the final over-speed protection.

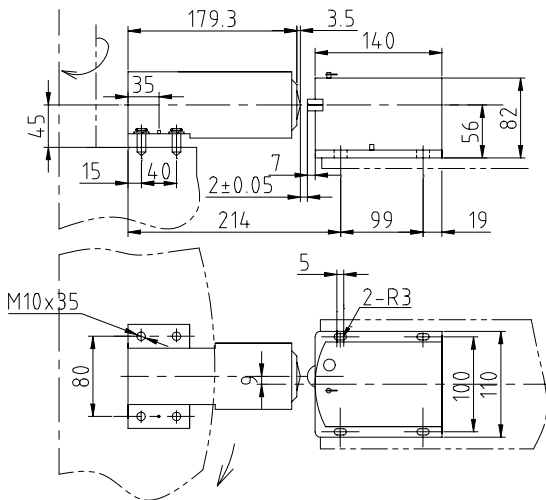


ROTATE SPEED DETECTOR (RSD)



ROTATE SPEED TRIP (RST)

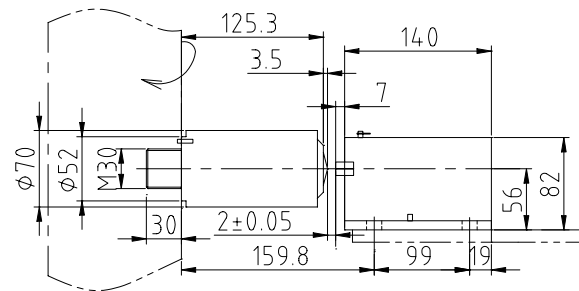
Installation Dimensions



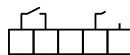
A TYPE

Technical Parameters

- Rotate speed setting value range : 100-200% nr
- Rotate speed setting tolerance : 2%
- Weight of the RSD : 2.05kg
- Weight of the RST : 1.5kg
- Output contact capacity: AC 220V 5A AC 380V 2A
DC 24V 3A DC 220V 1A



B TYPE



The setting value of the device is 100-200% of the rating rotate speed, setting before delivery. Users may make a little adjustment according to own requirement.